

Welcome to 1,2,3 Math Fonts!

1, 2, 3 Math Fonts is an essential tool in the development of materials for the mathematics classroom. Use them to form your own creative worksheets, assessments, presentations and more!

Single User License

If you purchased a single user license, you have permission to install and use 1, 2, 3 Math Fonts on your school computer and your home computer. Please do not “share” with other computers or network this software.

School Site License

Purchase of a site license allows you to install 1, 2, 3 Math Fonts on every computer in your school as well as each teacher’s home computer. You may also install this software on a school network, but not on a district server.

District License

Purchase of a district license allows you to install 1, 2, 3 Math Fonts on all district computers and district employee’s home computers. The software may also be placed on a district network.

Publishing

Print items created with 1, 2, 3 Math Fonts may be freely distributed. Print items created for sale should have the acknowledgement “A portion of the materials contained in this publication were created with the use of 1, 2, 3 Math Fonts” on the copyright page. There are no publishing fees. The fonts may not be distributed in any way, nor can they be embedded on websites. Please contact mathfonts@justusteachers.com for more information.

*Please do not “share” 1,2,3 Math Fonts in any manner inconsistent with your license.

About the fonts...

1, 2, 3 Math Fonts has been specially created for math teachers. Every effort has been made to provide user-friendly fonts that will enhance your classroom teaching.

To make the fonts easy to find and use, all 1, 2, 3 Math Fonts start with “123” and have been grouped together near the top of your font menu.

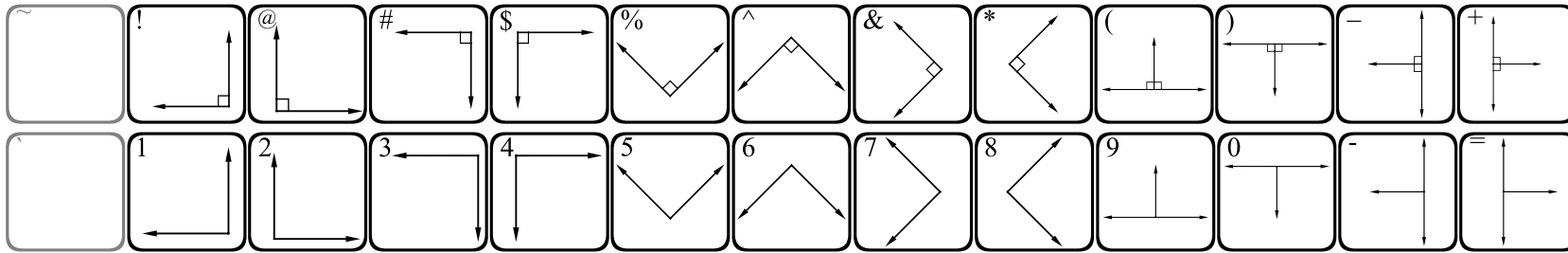
The following pages detail the keystrokes involved in each font. A detailed listing of each keystroke/symbol association is provided, followed by a short description of how each font is laid out on the keyboard.

Some of the specialty fonts (that place one keystroke on top of another) may require you to strike the space bar several times after you’ve typed a symbol in order to avoid inadvertently placing one symbol on top of another.

Most of the fonts will be easier to see in larger sizes (48 and higher). Some fonts may appear incomplete on your computer screen when using smaller sizes, but will print clearly.

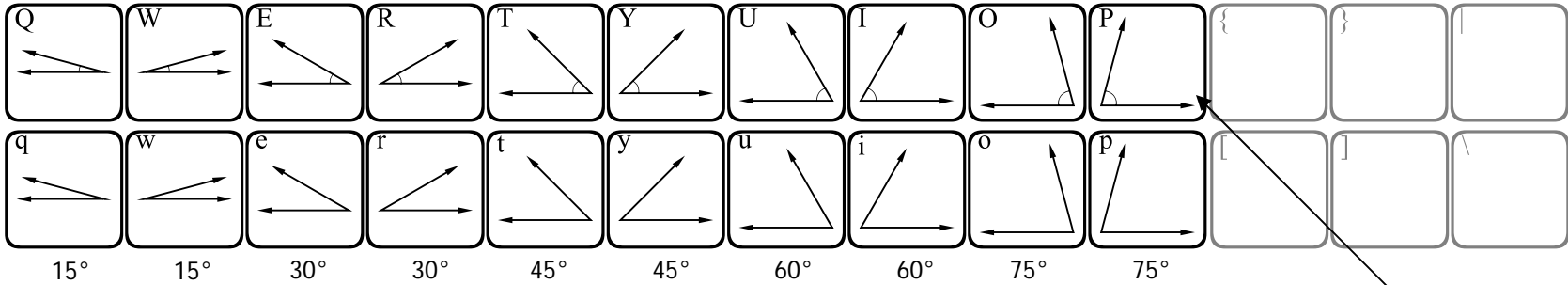
Keep in mind that all the features that work on your other installed fonts will also work on all of your 1, 2, 3 Math Fonts. Thus, the **Bold** feature will make your font bolder, Underline will underline your font, and *Italicize* will italicize your font!

123Angles1



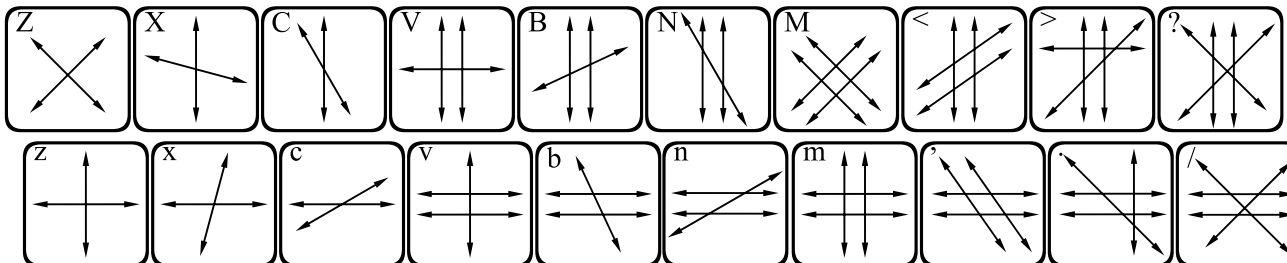
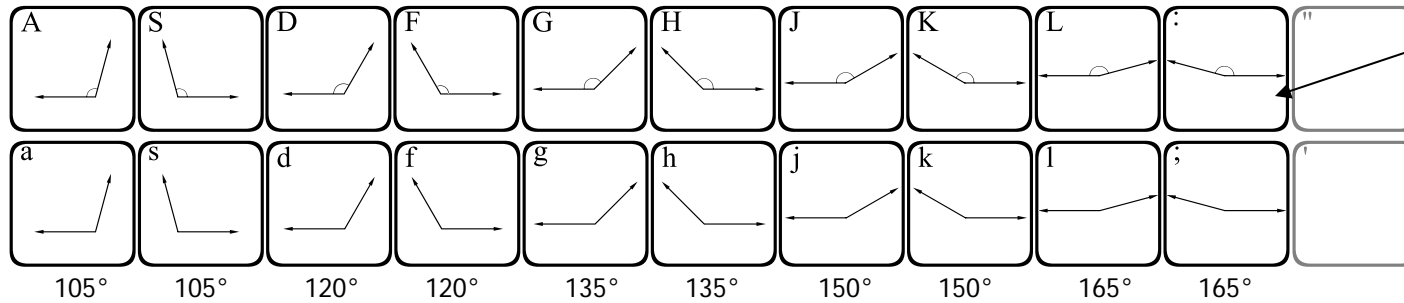
Right angles in various positions.

Acute angles in 15° increments.



Pressing SHIFT will provide the same angle contained on the lowercase key, but with an angle marking.

Obtuse angles in 15° increments.



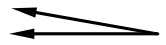
123Angles2

Requires 2 or more keystrokes. Type any 2 keys to create an angle.

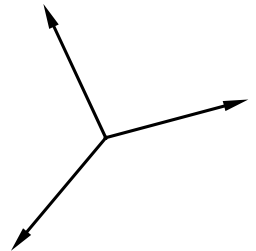
- Press any 2 keys, and the 2 rays associated with those keys will meet at their endpoints to form an angle.
- Press the spacebar several times to move the cursor past the angle you have created.

~	!	@	#	\$	%	^	&	*	()	-	+
^	1	2	3	4	5	6	7	8	9	0	-	=
Q	W	E	R	T	Y	U	I	O	P	{	}	
q	w	e	r	t	y	u	i	o	p	[]	\
A	S	D	F	G	H	J	K	L	:	"		
a	s	d	f	g	h	j	k	l	;	'		
Z	X	C	V	B	N	M	<	>	?			
z	x	c	v	b	n	m	,	.	/			

Type 13 to make

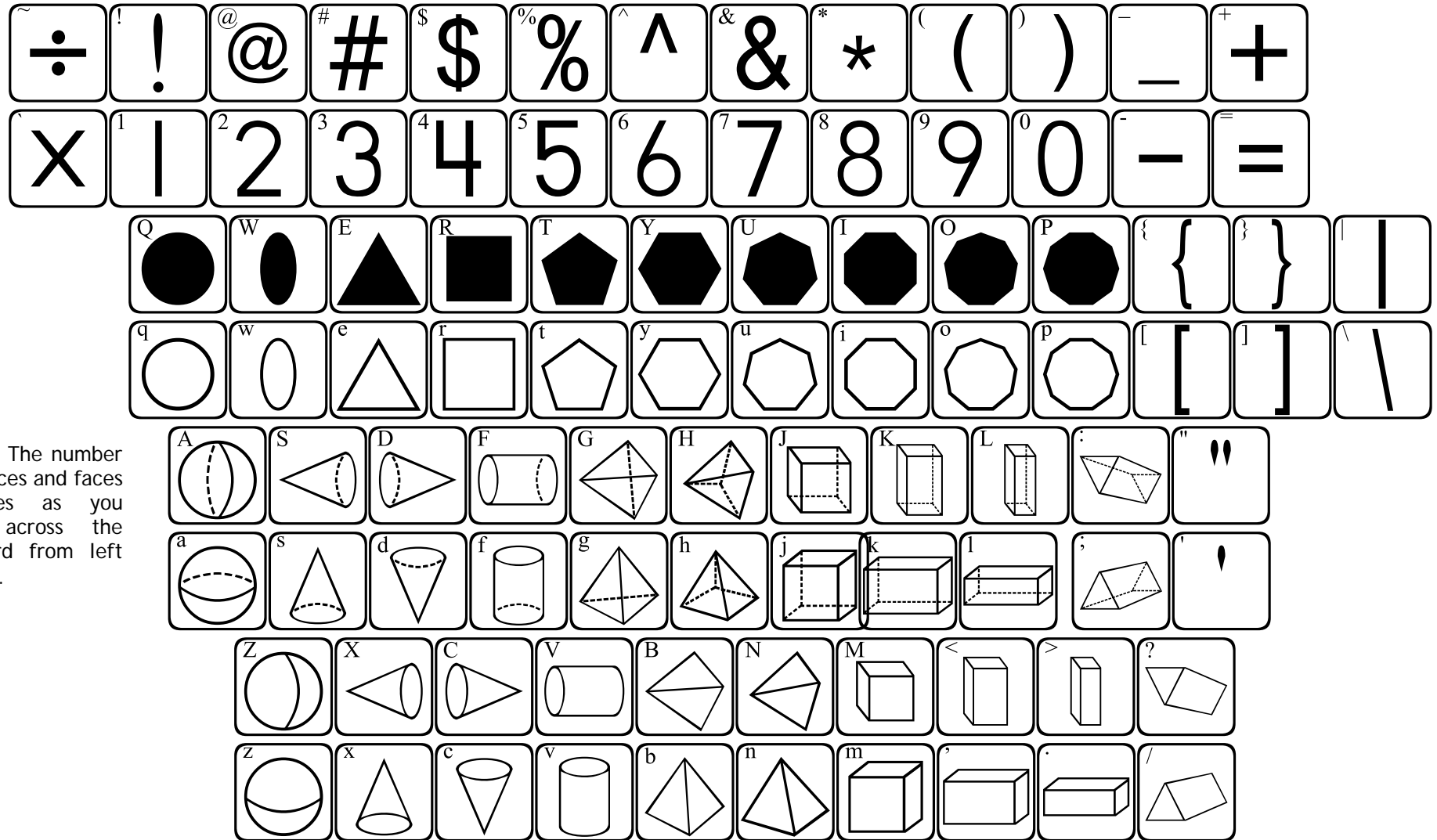


Type tWm to make



Moving from left to right, angles increase by 5 degree increments. Lowercase keys point "up", while uppercase point "down". Try pressing more than 2 keys to create multiple angles with a common vertex.

123Geometry1

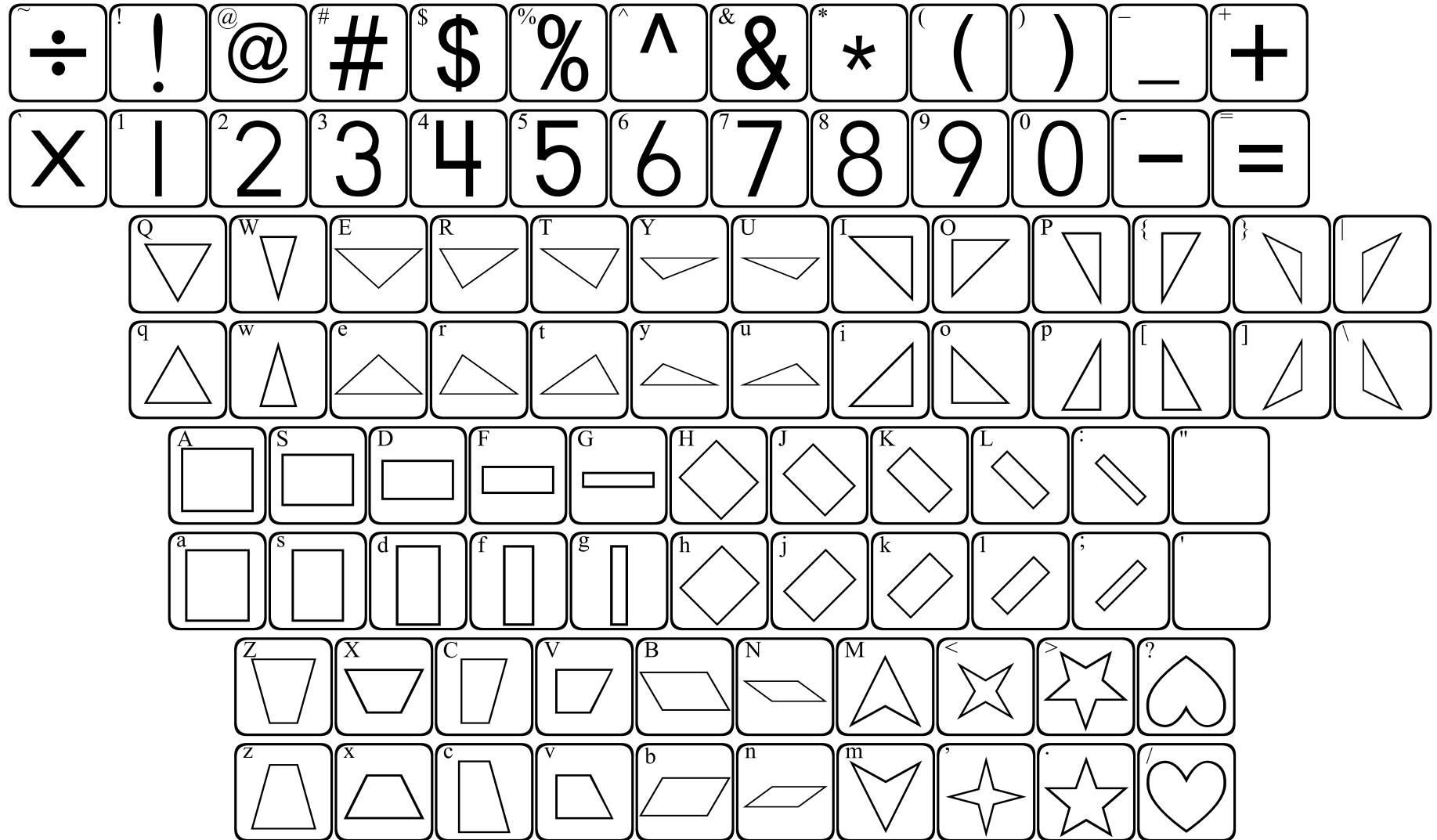


NOTE: The number of vertices and faces increases as you move across the keyboard from left to right.

123Geometry1 contains representations of many types of polygons and solids. The qwerty row of letters shows plane figures. The lowercase keys provide outlines of the shapes, while the uppercase keys provide the same shape completely filled in.

The remaining rows contain images of solid figures. Shapes are provided on each lowercase key, with the same shape in a different position on the uppercase keys.

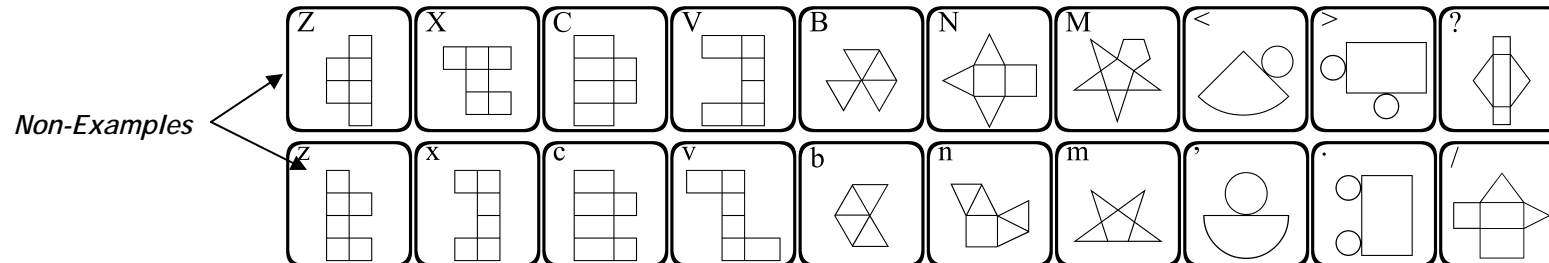
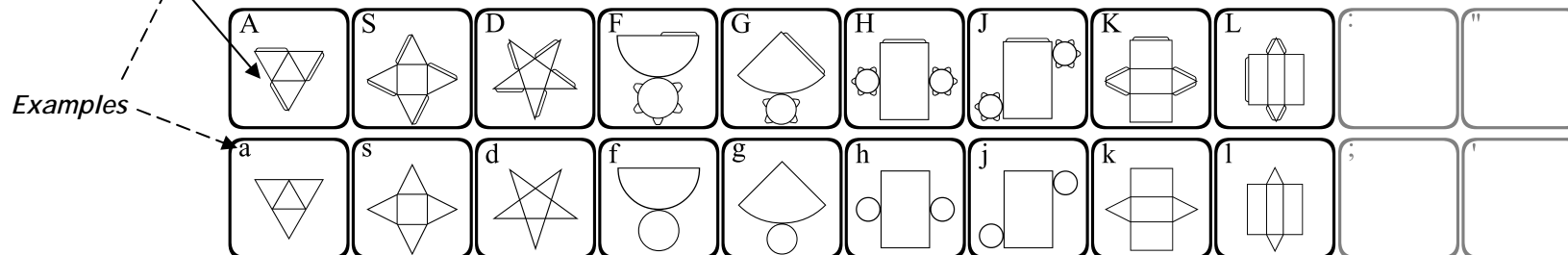
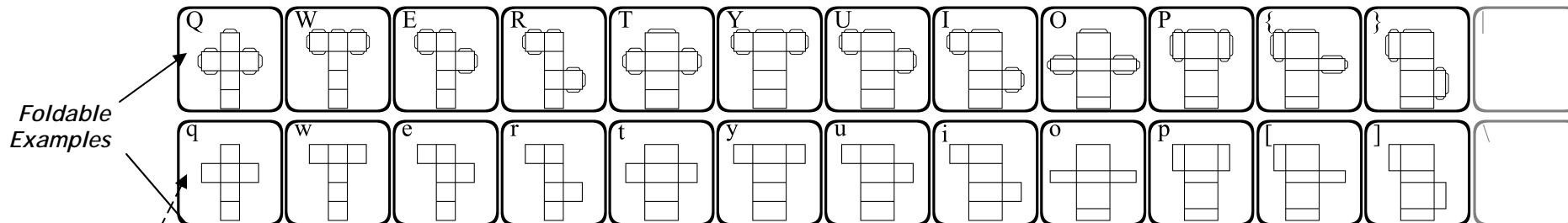
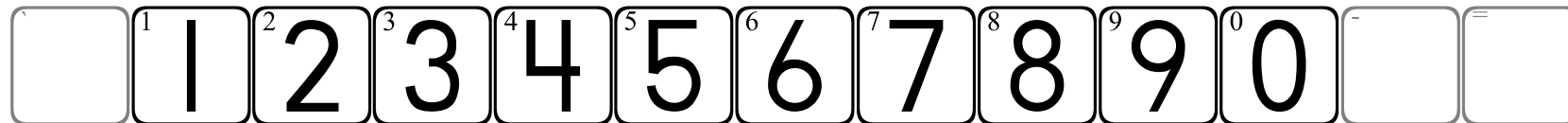
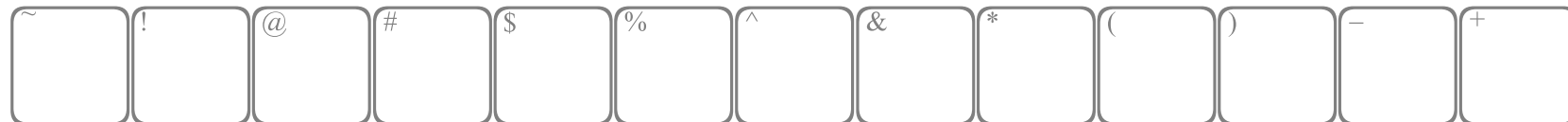
123Geometry2



This font supplies a variety of geometric shapes. The first row of letters provides triangles, the second row provides rectangles, while the last row contains an assortment of shapes.

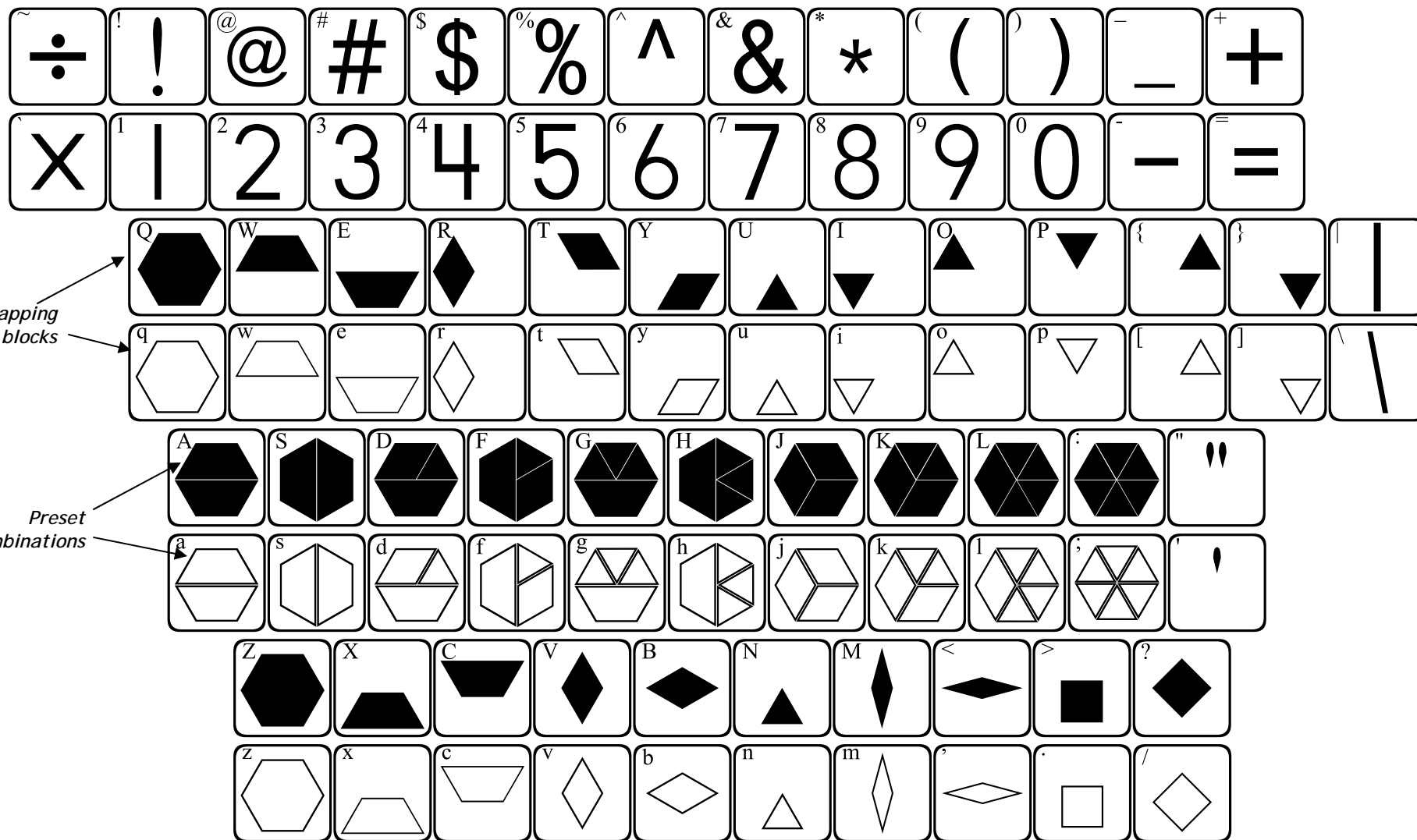
The lowercase keys will show each shape in one position, while the uppercase keys show the same shape in a different position.

123Nets1



123PatternBlocks

May require 2 or more keystrokes.



123PatternBlocks allows you to place standard pattern blocks into a variety of positions. On each row of letters, the lowercase letters place an outline of a block, while the uppercase keys place the same blocks in solid forms. The color of each block can be formatted individually if you would like to make them match actual pattern blocks.

The first row of letters (qwerty) allows you to place blocks in overlapping positions. When using this row of keys, the cursor will not advance until you press the spacebar.

The second row of letters provides preset combinations of blocks. The last row provides each pattern block individually.